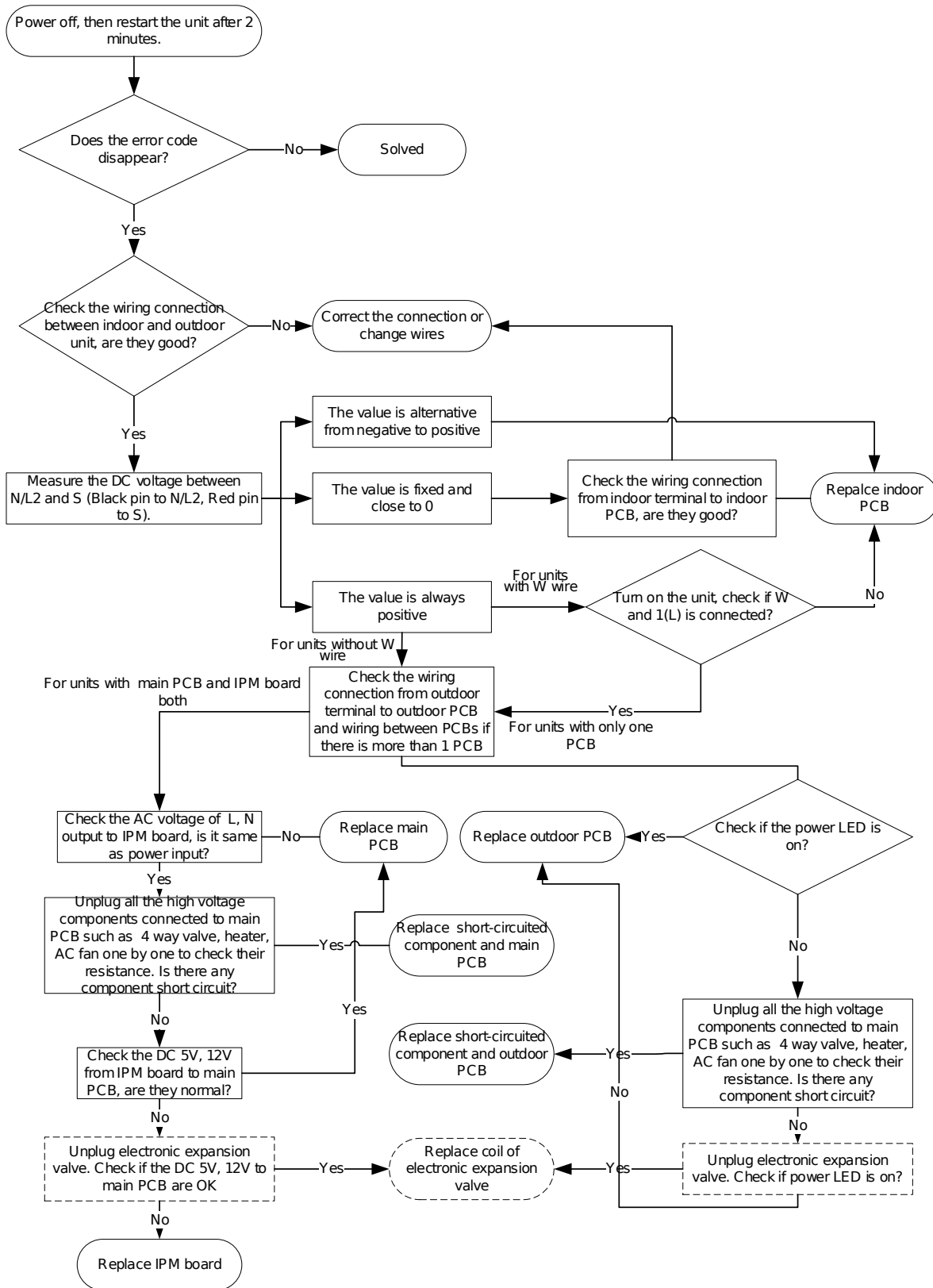


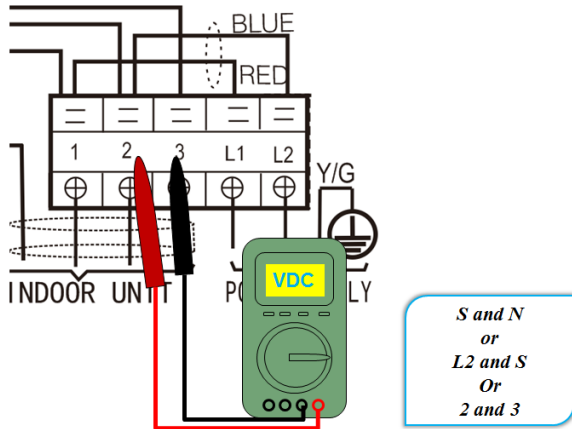
15.4.2 Communication malfunction between indoor and outdoor units diagnosis and solution (E1)

For 9K-24K:

Error Code	E1/ EL 01
Malfunction conditions	If the indoor unit does not receive feedback from outdoor unit for 110 seconds 4 consecutive times.
Potential causes	<ul style="list-style-type: none">● Wiring mistake● Faulty indoor or outdoor PCB

Trouble shooting:





Remark:

Use a multimeter to test the DC voltage between 2 port and 3 port of outdoor unit. The red pin of multimeter connects with 2 port while the black pin is for 3 port.

When AC is normal running, the voltage will move alternately between -50V to 50V.

If the outdoor unit has malfunction, the voltage will move alternately with positive value.

While if the indoor unit has malfunction, the voltage will be a certain value.

Remark,

The old label is L1,L2,S, L1,L2

The new label is 1, 2, 3, L1,L2



Remark:

Use a multimeter to test the resistance of the reactor which does not connect with capacitor. The normal value should be around zero ohm. Otherwise, the reactor must have malfunction and need to be replaced.

For 36K-60K:

Malfunction conditions	Indoor unit does not receive feedback from outdoor unit for 60 seconds OR outdoor unit does not receive feedback from indoor unit for 120 seconds.
Possible causes	<ul style="list-style-type: none"> ● Wiring mistakes ● Faulty indoor or outdoor PCB

