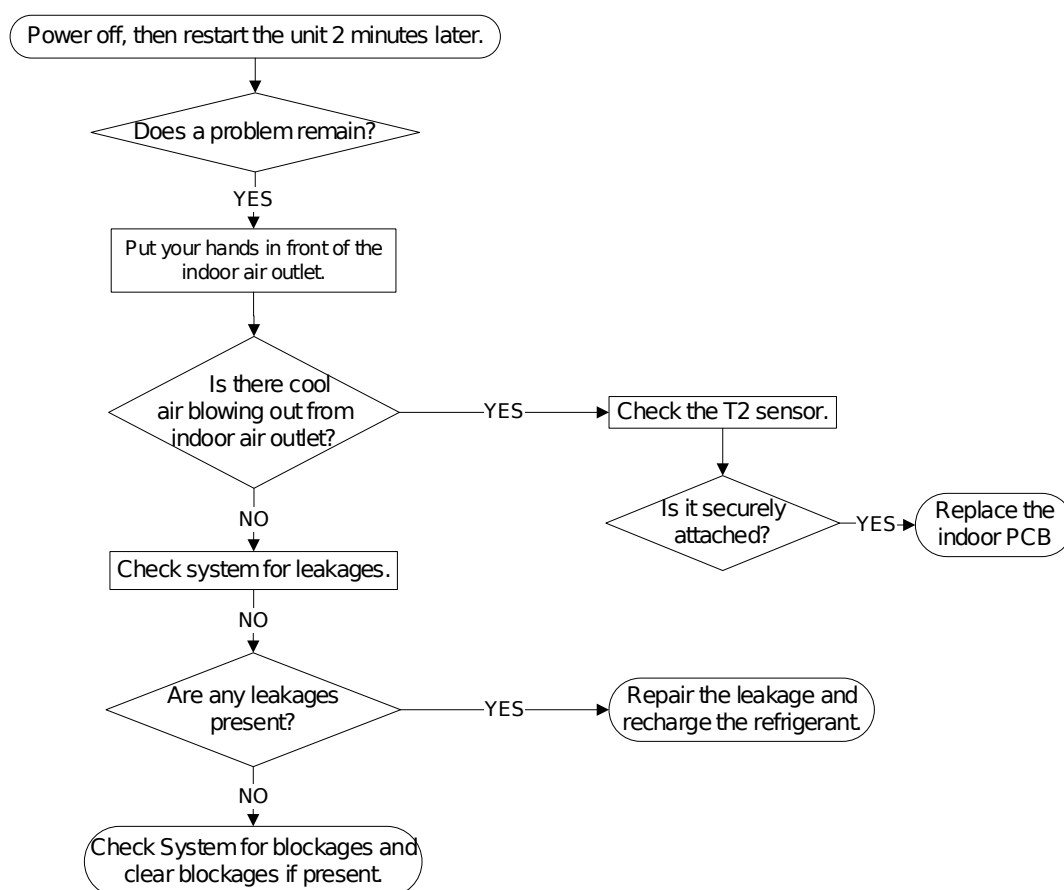


15.4.6 Refrigerant Leakage Detection diagnosis and solution

Error Code	EC/EL 0C
Malfunction conditions	<p>Define the evaporator coil temperature T2 of the compressor starts running as Tcool.</p> <p>If the following occurs 3 times, the display shows "EC" and the unit switches off:</p> <p>In the first 8 minutes after the compressor starts up, if $T2 \geq Tcool + 2^{\circ}C$ is not maintained for 4 seconds and compressor running frequency is not higher than 50Hz for 3 minutes.</p> <p>For new cassette: Judging the abnormality of the refrigeration system according to the number of compressor stops and the changes in operating parameters caused by <u>excessive exhaust temperature</u></p>
Potential Causes	<ul style="list-style-type: none"> ● Faulty T2 sensor ● Faulty indoor PCB ● System problems, such as leakage or blockages

Trouble shooting:



For new cassette:

