

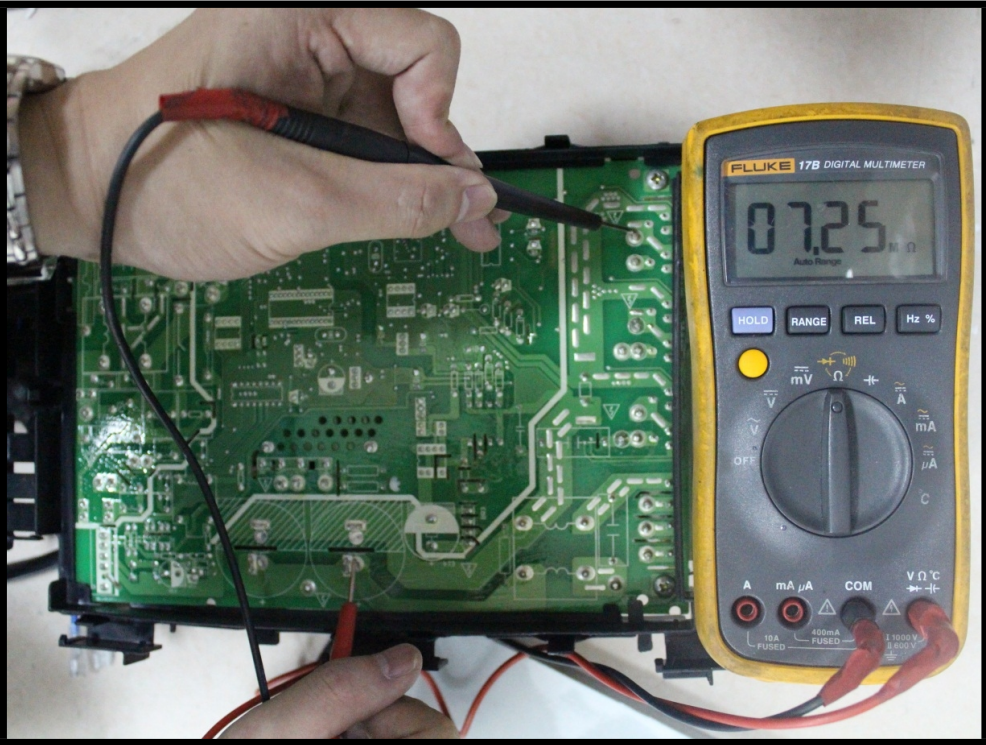
15.4.8 IPM malfunction or IGBT over-strong current protection diagnosis and solution

Error Code	P0/PC 00
Malfunction conditions	When the voltage signal the IPM sends to the compressor drive chip is abnormal, the display LED shows failure code
Possible causes	<ul style="list-style-type: none">● Wiring mistake● IPM malfunction

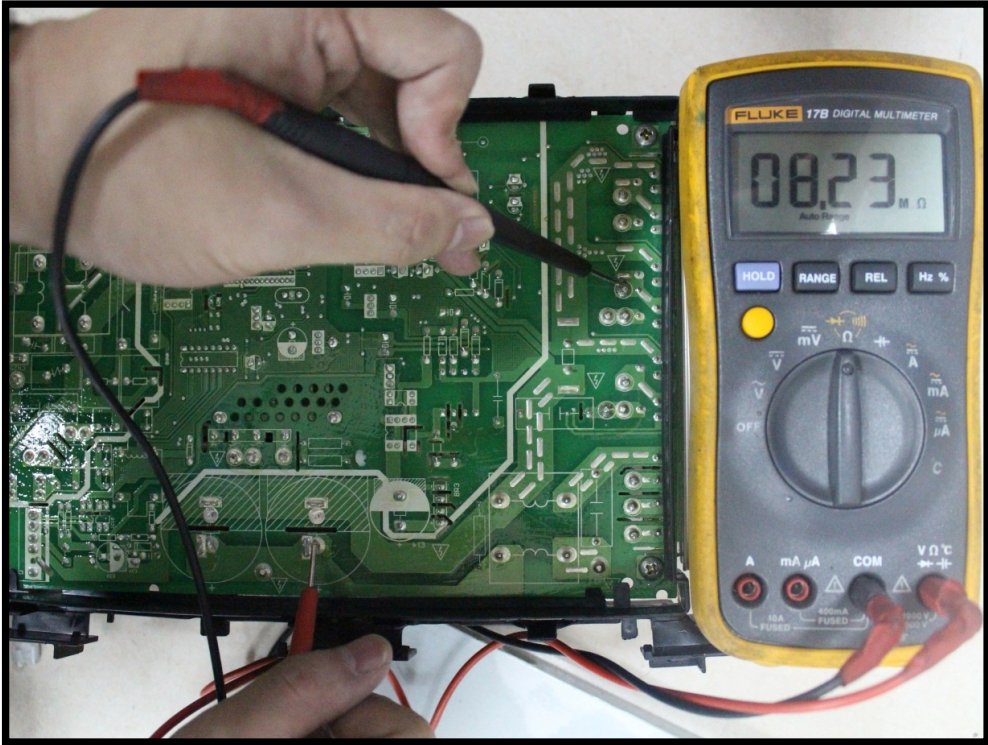
Trouble shooting:

First, test the resistance between every two ports of U, V, the W of the IPM and P, N. If any of the results is 0 or close to 0, the IPM is defective. If not, follow the following procedure:

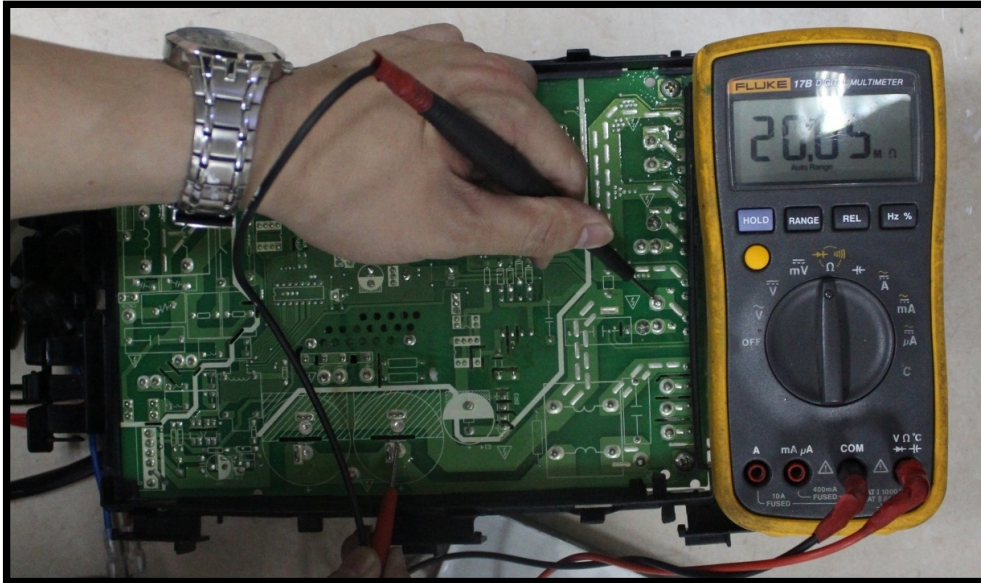




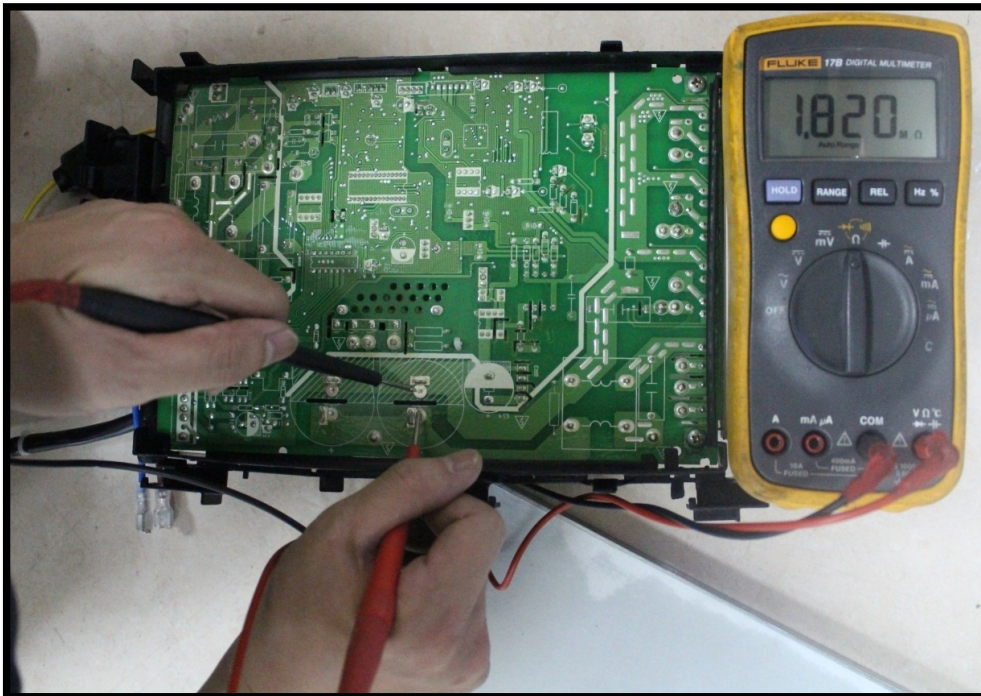
P-U



P-V



P-W



P-N