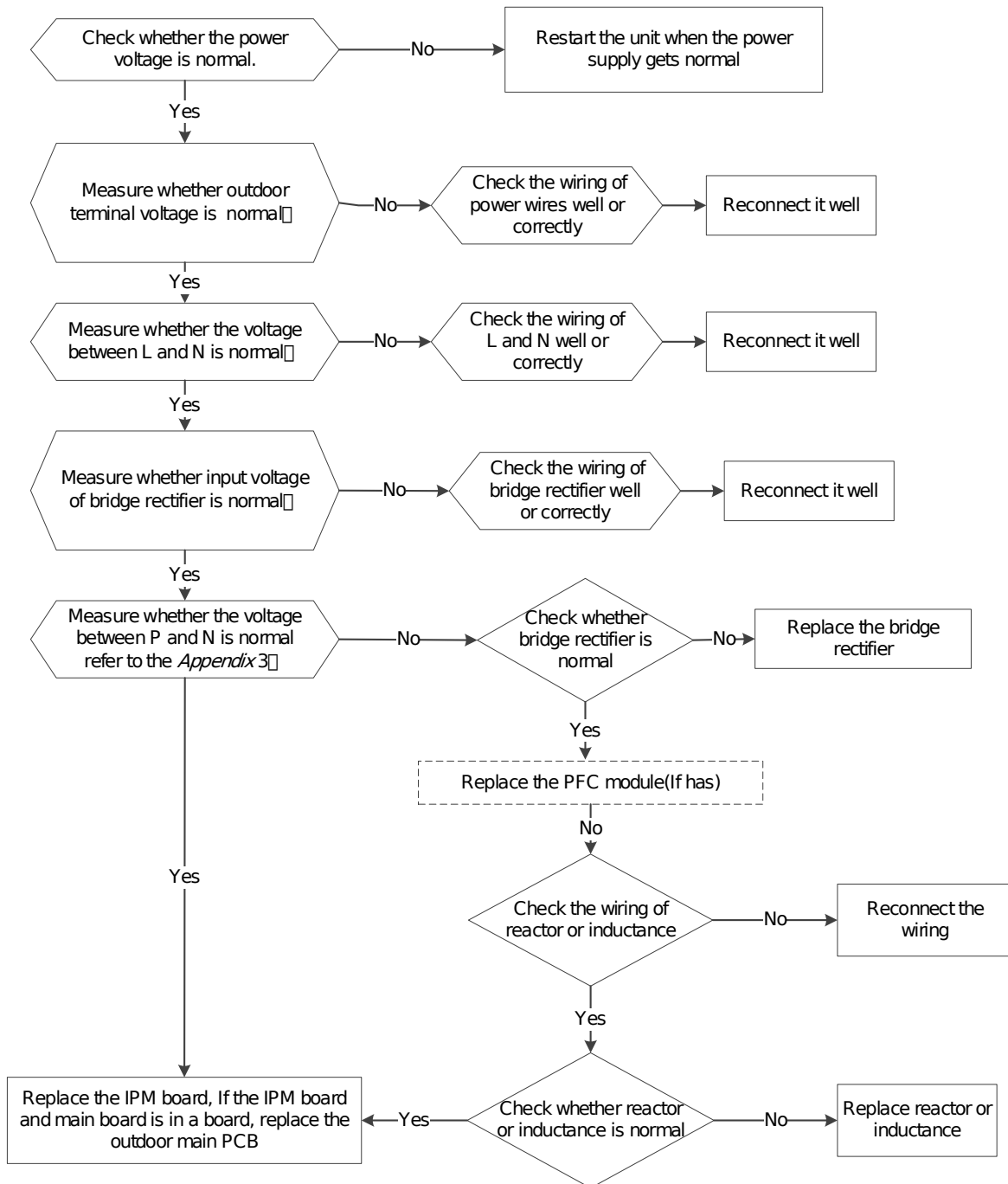
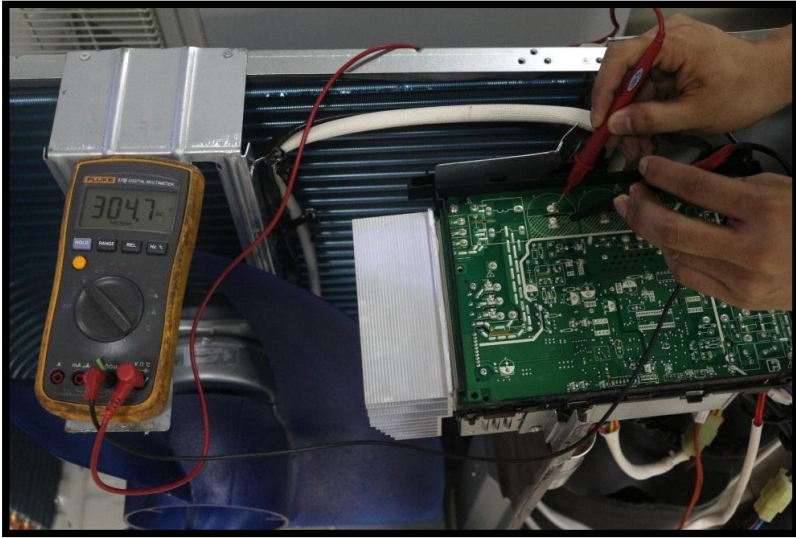


15.4.9 Over-voltage or under-voltage protection diagnosis and solution

Error Code	P1/ PC 01/ PC 10/ PC 11/ PC 12
Malfunction conditions	Abnormal increases or decreases in voltage are detected by checking the specified voltage detection circuit.
Potential causes	<ul style="list-style-type: none"> ● Power supply issues ● System leakage or blockage ● Faulty PCB

Trouble shooting:





Remark:

Measure the DC voltage between P and N port. The normal value should be around 310V.340V