

Mitsutomo Submittal Data Sheet

R-454B 9K Slim Ducted Multi Zone Evap

Job Name: _____

Engineer: _____

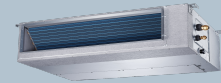
Submitted By: _____

Date: _____

Unit Tag: _____


System Info & Features:

- Slim design
- Up to .8" Static Pressure
- Heating down to -22 deg
- Self diagnostics
- Super quiet
- 7 Day Programmable Wall Thermostat



MODEL NUMBER

Indoor unit: S-HD-UZ09-LA-Q

Certified:    

SYSTEM PERFORMANCE DATA

| Electrical: | | |
|----------------------------|-------------|-------------------|
| Normal Operational Voltage | (V, Ph, Hz) | 208/230V,60Hz,1Ph |
| Connection wiring | | 14/4 |
| Performance Data: | | |
| Rated Capacity | | 9000 |
| Min/Max Capacity | | 3000~13100 |
| Moisture Removal | (L/H) | 0.69 |

REFRIGERANT PIPE DATA

| Refrigerant Type | | R454B |
|----------------------|-----------|---------|
| Liquid Side | (inch) | 1/4 |
| Gas Side | (inch) | 3/8 |
| Connection Method | | Flared |
| Temperature Ratings: | | |
| Indoor (cooling) | (Deg. °F) | -22~122 |
| Indoor (heating) | (Deg. °F) | -22~75 |

OPTIONAL ACCESSORIES

3rd Party Thermostat Interface Adapter 17222000A68532

INDOOR UNIT DATA

| | | |
|-----------|-------|-----|
| Fan Motor | (RLA) | 1.5 |
| Fan Motor | (W) | 165 |

Air Flow & Sound Data:

| | | |
|------------------------------------|-------|---------------------------------------|
| Indoor Air Flow (Turbo/H/M/L/Q) | (CFM) | 344.3 / 288.4 / 230.7 / 200.7 / 121.8 |
| Indoor Noise Level (Turbo/H/M/L/Q) | (DBA) | 29.5 / 29.5 / 28.5 / 27.5 / 26 |

Dimensions:

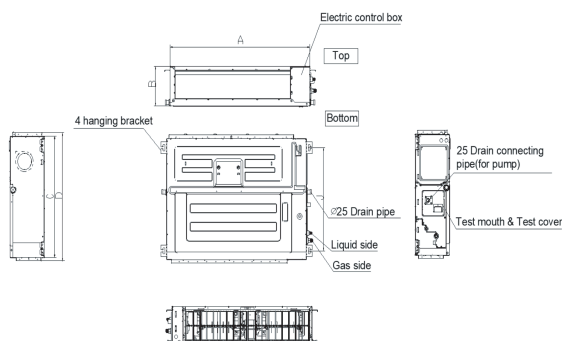
| Indoor: | | |
|-------------------|--------|-----------------------|
| Dimension (WxDxH) | (inch) | 27.56 x 29.53 x 9.65 |
| Packing(WxDxH) | (inch) | 36.42 x 33.46 x 11.73 |
| Unit weight | (lbs.) | 64.15 |
| Shipping Weight | (lbs.) | 73.85 |

WARRANTY



5 years compressor
5 years parts

Indoor Unit Dimension



| Capacity | W | D | H |
|----------|-------|-------|------|
| 9k | 27.56 | 29.53 | 9.65 |