

## Mitsutomo Submittal Data Sheet

# R-454B 18k High Heat Multi Position Air Handler Heat Pump

**Job Name:** \_\_\_\_\_

**Engineer:** \_\_\_\_\_

**Submitted By:** \_\_\_\_\_

**Date:** \_\_\_\_\_

**Unit Tag:** \_\_\_\_\_

### System Info & Features:

- 4 way multi position air handler
- Up to .8" static pressure
- 24V thermostat option
- Heating down to -22 deg F
- Self diagnostics
- Super quiet
- ECM blower motor
- Programmable smart wall thermostat
- Large handheld remote
- Auto condenser coil cleaning cycle



MODEL NUMBER	
Indoor unit:	UHM18-BB-LA-Q
Outdoor unit:	UHO18-NB-LA-Q
Certified:	

OPTIONAL ACCESSORIES	
8kw Electric Heat Kit	M-EAH-08-Q
15kw Electric Heat Kit	M-EAH-15-Q

SYSTEM PERFORMANCE AND DATA	
Cooling Efficiencies and Performance	
SEER2	19.0
EER2	12.5
Rated Capacity	18000
Min/Max Capacity	5600~22000
Moisture Removal (L/H)	1.65
Standard Operating Range (F°)	-22~-122
Conditions:	Indoor: 80F° DB/67F° WB Outdoor: 95F° DB/75F° WB
Heating Efficiencies and Performance	
HSPF2-4	9.7
COP	3.20
1. @ 47F° Rated	19000
1. @ 47F° Min/Max Capacity	6000~22000
2. @ 17F° Rated	15000
3. @ 5F° Rated: Capacity / COP	18000/2
3. @ 5F° Max: Capacity	18000
Standard Operating Range (F°)	-22~-75
1. Conditions:	Indoor: 70F° DB/60F° WB Outdoor: 47F° DB/43F° WB
2. Conditions:	Indoor: 70F° DB/60F° WB Outdoor: 17F° DB/15F° WB
3. Conditions:	Indoor: 70F° DB/60F° WB Outdoor: 5F° DB/5F° WB

SPECIFICATIONS	
Indoor:	
Indoor Air Flow (Turbo/H/M/L/Q)	(CFM) 618.0 / 576.8 / 529.7 / 488.5 / 488.5
Indoor Noise Level (Turbo/H/M/L/Q)	(DBA) 41 / 41 / 39 / 33 / 33
Heating Efficiencies and Performance	
Compressor Type	ROTARY
Refrigerant	R454B
Refrigerant Oil Charge (OZ)	20.96
Refrigerant Oil	VG74
Outdoor Air Flow (Max)	(CFM) 1765.7
Outdoor Noise Level (DBA)	59

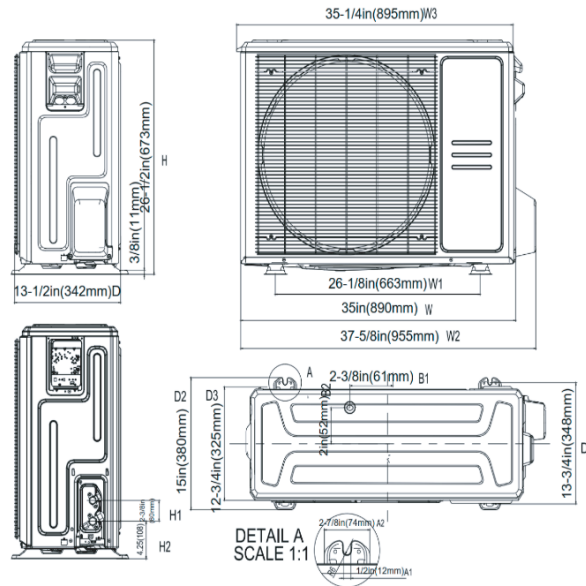
ELECTRICAL	
Indoor Power Supply	115/208/230V,60Hz,1Ph
Indoor Min. Circuit Amps 115V/(208/230V)	5.5/4.0
Indoor Max Over Current Protection	15
Outdoor Power Supply	208/230V,60Hz,1Ph
Outdoor Min. Circuit Amps	16
Outdoor Max Over Current Protection	20
Communication Wiring	18-2 Mitsutomo Thermostat 18-10 3rd Party Thermostat
Compressor (RLA)	10.5
Outdoor Fan Motor (RLA)	0.9
Outdoor Fan Motor (W)	80
Indoor Fan Motor (RLA)	2
Indoor Fan Motor (W)	250
System Power Input @ Cooling (W)	1445(440 ~ 1950)
System Power Input @ Heating (W)	1740(500 ~1950)

DIMENSIONS		
Indoor:		
Dimension (W×D×H)		17.52 x21.02 x 45.00
Package (W×D×H)		26.57 x 20.87 x 48.62
Unit Weight (lbs)		105.82
Shipping Weight (lbs)		126.76
Outdoor:		
Dimension (W×D×H)		35.04 x 13.46 x 26.50
Package (W×D×H)		39.17 x 15.67 x 29.13
Unit Weight (lbs)		101.41
Shipping Weight (lbs)		109.13

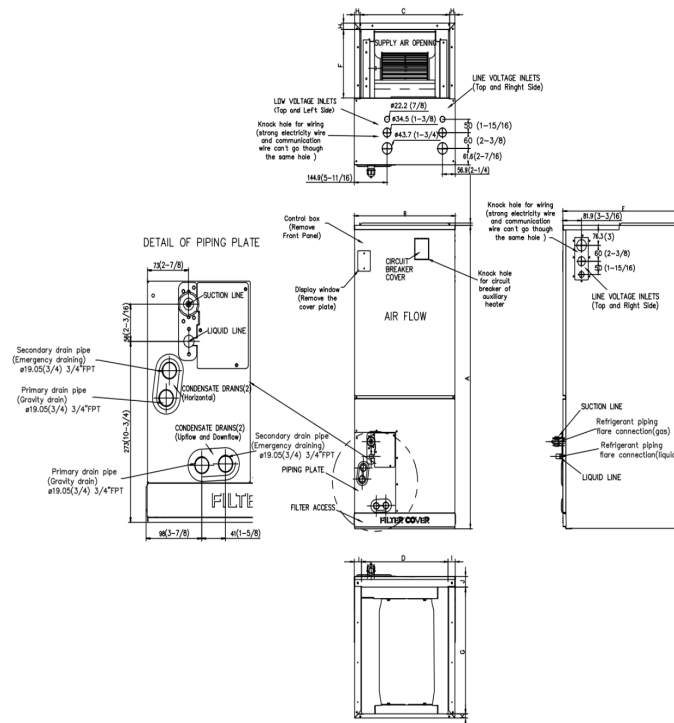
REFRIGERANT PIPE DATA	
Liquid Size (in.)	3/8
Gas Size (in.)	3/4
Max. Piping Length (ft)	98.4
Max. Height Difference (ft)	65.6
Max. Pre-charged Length (ft)	24.6
Refrigerant Pre-charged Amount (oz)	74.08
Additional Charge of Refrigerant (oz/ft)	0.7
Connection Method	Flared

WARRANTY	
	5 years compressor 5 years parts

## Outdoor Unit Dimension



## Indoor Unit Dimension (Internal Pump)



Model	Unit	A	B	C	D	E	F	G	H	I	J	K
18K	inch	45	17.5	15 5/8	15 1/8	21	10 1/4	18 3/4	15/16	11/4	15	5/8