

## Mitsutomo Submittal Data Sheet

# R-454B 33k High Heat Multi Position Air Handler Heat Pump

Job Name: \_\_\_\_\_

Engineer: \_\_\_\_\_

Submitted By: \_\_\_\_\_

Date: \_\_\_\_\_

Unit Tag: \_\_\_\_\_

### System Info & Features:

- 4 way multi position air handler
- Up to .8" static pressure
- 24V thermostat option
- Heating down to -22 deg F
- Self diagnostics
- Super quiet
- ECM blower motor
- Programmable smart wall thermostat
- Large handheld remote
- Auto condenser coil cleaning cycle



MODEL NUMBER	
Indoor unit:	UHM33-CB-LA-Q
Outdoor unit:	UHO33-NB-LD-Q
Certified:	

OPTIONAL ACCESSORIES	
8kw Electric Heat Kit	M-EAH-08-Q
15kw Electric Heat Kit	M-EAH-15-Q

SYSTEM PERFORMANCE AND DATA	
<b>Cooling Efficiencies and Performance</b>	
SEER2	16.5
EER2	10.0
Rated Capacity	36000
Min/Max Capacity	7900~36800
Moisture Removal (L/H)	3.92
Standard Operating Range (F°)	-22~122
Conditions:	Indoor: 80F° DB/67F° WB Outdoor: 95F° DB/75F° WB
<b>Heating Efficiencies and Performance</b>	
HSPF2-4	8.2
COP	3.26
1. @ 47F° Rated	37000
1. @ 47F° Min/Max Capacity	7500~38000
2. @ 17F° Rated	23200
3. @ 5F° Rated: Capacity / COP	32000/1.85
3. @ 5F° Max: Capacity	32000
Standard Operating Range (F°)	-22~75
1. Conditions:	Indoor: 70F° DB/60F° WB Outdoor: 47F° DB/43F° WB
2. Conditions:	Indoor: 70F° DB/60F° WB Outdoor: 17F° DB/15F° WB
3. Conditions:	Indoor: 70F° DB/60F° WB Outdoor: 5F° DB/5F° WB

SPECIFICATIONS	
<b>Indoor:</b>	
Indoor Air Flow (Turbo/H/M/L/Q)	(CFM) 1189.0 / 1083.0 / 971.2 / 865.2 / 865.2
Indoor Noise Level (Turbo/H/M/L/Q)	(DBA) 48.5 / 48.5 / 45.5 / 31 / 31
<b>Heating Efficiencies and Performance</b>	
Compressor Type	ROTARY
Refrigerant	R454B
Refrigerant Oil Charge (OZ)	43.96
Refrigerant Oil	HAF68D1A
Outdoor Air Flow (Max)	(CFM) 3001.9
Outdoor Noise Level	(DBA) 63.5

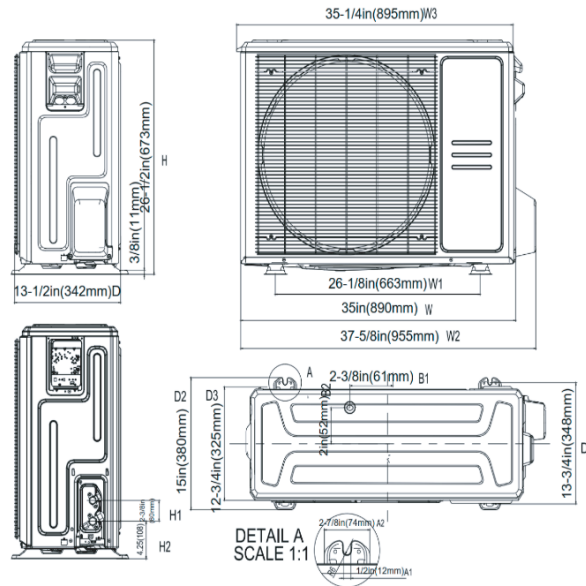
ELECTRICAL	
Indoor Power Supply	115/208/230V,60Hz,1Ph
Indoor Min. Circuit Amps 115V/(208/230V)	8.0/6.0
Indoor Max Over Current Protection	15
Outdoor Power Supply	208/230V,60Hz,1Ph
Outdoor Min. Circuit Amps	26
Outdoor Max Over Current Protection	30
Communication Wiring	18-2 Mitsutomo Thermostat 18-10 3rd Party Thermostat
Compressor (RLA)	18
Outdoor Fan Motor (RLA)	3
Outdoor Fan Motor (W)	150
Indoor Fan Motor (RLA)	4.5
Indoor Fan Motor (W)	375
System Power Input @ Cooling (W)	3600(870 ~ 4110)
System Power Input @ Heating (W)	3325(535 ~ 3500)

DIMENSIONS	
<b>Indoor:</b>	
Dimension (W×D×H)	21.02 x 21.02 x 49.02
Package (W×D×H)	26.57 x 24.41 x 52.56
Unit Weight (lbs)	129.41
Shipping Weight (lbs)	153.88
<b>Outdoor:</b>	
Dimension (W×D×H)	37.24 x 16.14 x 31.89
Package (W×D×H)	42.91 x 19.69 x 34.84
Unit Weight (lbs)	166.67
Shipping Weight (lbs)	176.37

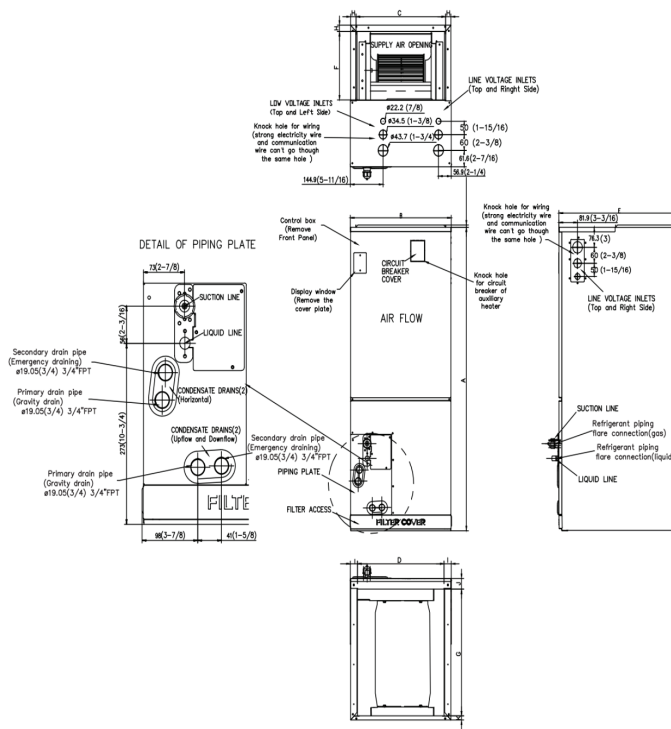
REFRIGERANT PIPE DATA	
Liquid Size (in.)	3/8
Gas Size (in.)	3/4
Max. Piping Length (ft)	246.0
Max. Height Difference (ft)	98.4
Max. Pre-charged Length (ft)	24.6
Refrigerant Pre-charged Amount (oz)	126.99
Additional Charge of Refrigerant (oz/ft)	0.7
Connection Method	Flared

WARRANTY	
	5 years compressor 5 years parts

# Outdoor Unit Dimension



# Indoor Unit Dimension (Internal Pump)



Model	Unit	A	B	C	D	E	F	G	H	I	J	K
33K	inch	49	21	19 1/8	18 5/8	21	10 1/4	18 3/4	15/16	11/4	15/8	5/8