

Mitsutomo Submittal Data Sheet

R-454B 36k High Heat Multi Position Air Handler Heat Pump

Job Name: _____

Engineer: _____

Submitted By: _____

Date: _____

Unit Tag: _____

System Info & Features:

- 4 way multi position air handler
- Up to .8" static pressure
- 24V thermostat option
- Heating down to -22 deg F
- Self diagnostics
- Super quiet
- ECM blower motor
- Programmable smart wall thermostat
- Large handheld remote
- Auto condenser coil cleaning cycle



MODEL NUMBER	
Indoor unit:	UHM36-CB-LA-Q
Outdoor unit:	UHO36-NB-LA-Q
Certified:	

OPTIONAL ACCESSORIES	
8kw Electric Heat Kit	M-EAH-08-Q
15kw Electric Heat Kit	M-EAH-15-Q

SYSTEM PERFORMANCE AND DATA	
Cooling Efficiencies and Performance	
SEER2	17.4
EER2	11.7
Rated Capacity	36000
Min/Max Capacity	9700~42000
Moisture Removal (L/H)	3.4
Standard Operating Range (F°)	-22~122
Conditions:	Indoor: 80F° DB/67F° WB Outdoor: 95F° DB/75F° WB
Heating Efficiencies and Performance	
HSPF2-4	10.2
COP	3.60
1. @ 47F° Rated	37000
1. @ 47F° Min/Max Capacity	11000~48000
2. @ 17F° Rated	31800
3. @ 5F° Rated: Capacity / COP	39000/1.9
3. @ 5F° Max: Capacity	39000
Standard Operating Range (F°)	-22~75
1. Conditions:	Indoor: 70F° DB/60F° WB Outdoor: 47F° DB/43F° WB
2. Conditions:	Indoor: 70F° DB/60F° WB Outdoor: 17F° DB/15F° WB
3. Conditions:	Indoor: 70F° DB/60F° WB Outdoor: 5F° DB/5F° WB

SPECIFICATIONS	
Indoor:	
Indoor Air Flow (Turbo/H/M/L/Q)	(CFM) 1189.0 / 1083.0 / 971.2 / 865.2 / 865.2
Indoor Noise Level (Turbo/H/M/L/Q)	(DBA) 49/48.0/45.5/25.5/25.5
Heating Efficiencies and Performance	
Compressor Type	TWIN-ROTARY
Refrigerant	R454B
Refrigerant Oil Charge (OZ)	49.37
Refrigerant Oil	VG75
Outdoor Air Flow (Max)	(CFM) 3001.8
Outdoor Noise Level	(DBA) 62.5

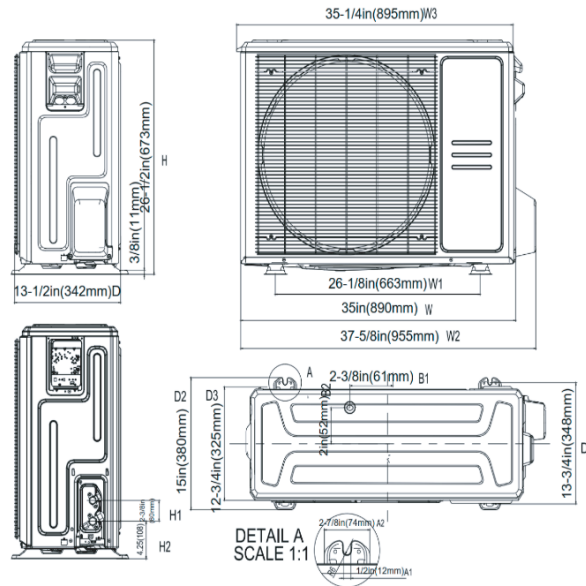
ELECTRICAL	
Indoor Power Supply	115/208/230V,60Hz,1Ph
Indoor Min. Circuit Amps 115V/(208/230V)	8.0/6.0
Indoor Max Over Current Protection	15
Outdoor Power Supply	208/230V,60Hz,1Ph
Outdoor Min. Circuit Amps	29
Outdoor Max Over Current Protection	30
Communication Wiring	18-2 Mitsutomo Thermostat 18-10 3rd Party Thermostat
Compressor (RLA)	20.5
Outdoor Fan Motor (RLA)	2.4
Outdoor Fan Motor (W)	250
Indoor Fan Motor (RLA)	4.5
Indoor Fan Motor (W)	375
System Power Input @ Cooling (W)	3076(820 ~ 4440)
System Power Input @ Heating (W)	3012(665 ~4370)

DIMENSIONS	
Indoor:	
Dimension (W×D×H)	21.02 x 21.02 x 49.02
Package (W×D×H)	26.57 x 24.41 x 52.56
Unit Weight (lbs)	129.41
Shipping Weight (lbs)	153.88
Outdoor:	
Dimension (W×D×H)	38.58 x 16.34 x 38.39
Package (W×D×H)	45.08 x 19.68 x 42.52
Unit Weight (lbs)	204.15
Shipping Weight (lbs)	235.23

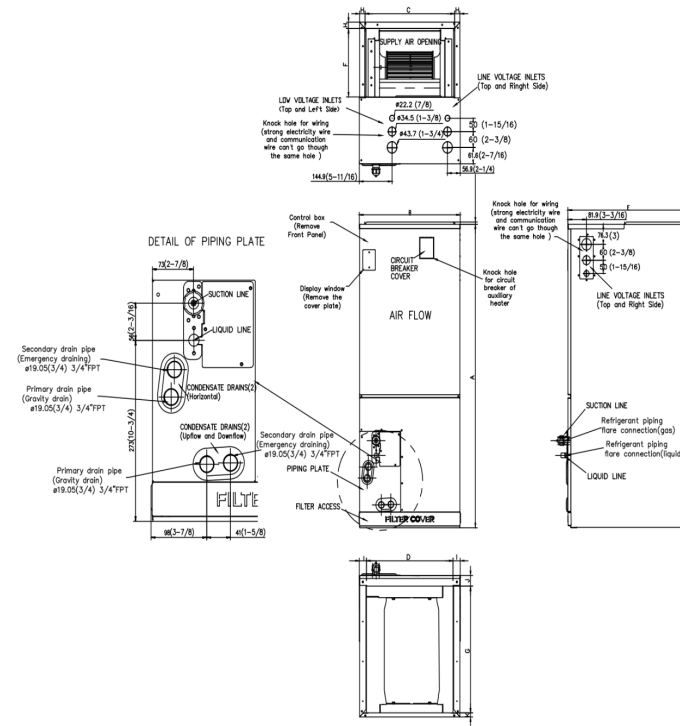
REFRIGERANT PIPE DATA	
Liquid Size (in.)	3/8
Gas Size (in.)	3/4
Max. Piping Length (ft)	246.0
Max. Height Difference (ft)	98.4
Max. Pre-charged Length (ft)	24.6
Refrigerant Pre-charged Amount (oz)	126.99
Additional Charge of Refrigerant (oz/ft)	0.7
Connection Method	Flared

WARRANTY	
	5 years compressor 5 years parts

Outdoor Unit Dimension



Indoor Unit Dimension (Internal Pump)



Model	Unit	A	B	C	D	E	F	G	H	I	J	K
36K	inch	49	21	19 1/8	18 5/8	21	10 1/4	18 3/4	15/16	11/4	15/8	5/8