

Mitsutomo Submittal Data Sheet

R-454B 48k High Heat Multi Position Air Handler Heat Pump

Job Name: _____

Engineer: _____

Submitted By: _____

Date: _____

Unit Tag: _____

System Info & Features:

- 4 way multi position air handler
- Up to .8" static pressure
- 24V thermostat option
- Heating down to -22 deg F
- Self diagnostics
- Super quiet
- ECM blower motor
- Programmable smart wall thermostat
- Large handheld remote
- Auto condenser coil cleaning cycle



MODEL NUMBER	
Indoor unit:	UHM48-DB-LA-Q
Outdoor unit:	UHO48-NB-LA-Q
Certified:	

OPTIONAL ACCESSORIES	
8kw Electric Heat Kit	M-EAH-08-Q
15kw Electric Heat Kit	M-EAH-15-Q

SYSTEM PERFORMANCE AND DATA	
Cooling Efficiencies and Performance	
SEER2	16.5
EER2	10.5
Rated Capacity	48000
Min/Max Capacity	15600~51000
Moisture Removal (L/H)	3.85
Standard Operating Range (F°)	-22~-122
Conditions:	Indoor: 80F° DB/67F° WB Outdoor: 95F° DB/75F° WB
Heating Efficiencies and Performance	
HSPF2-4	9.5
COP	3.40
1. @ 47F° Rated	50000
1. @ 47F° Min/Max Capacity	15500~57300
2. @ 17F° Rated	37000
3. @ 5F° Rated: Capacity / COP	46000/1.9
3. @ 5F° Max: Capacity	46000
Standard Operating Range (F°)	-22~-75
1. Conditions:	Indoor: 70F° DB/60F° WB Outdoor: 47F° DB/43F° WB
2. Conditions:	Indoor: 70F° DB/60F° WB Outdoor: 17F° DB/15F° WB
3. Conditions:	Indoor: 70F° DB/60F° WB Outdoor: 5F° DB/5F° WB

SPECIFICATIONS	
Indoor:	
Indoor Air Flow (Turbo/H/M/L/Q)	(CFM) 1601.0 / 1471.5 / 1283.1 / 1094.8 / 1094.8
Indoor Noise Level (Turbo/H/M/L/Q)	(DBA) 52 / 52 / 50 / 34 / 34
Heating Efficiencies and Performance	
Compressor Type	ROTARY
Refrigerant	R454B
Refrigerant Oil Charge (OZ)	60.87
Refrigerant Oil	HAF68D1C
Outdoor Air Flow (Max)	(CFM) 3037.1
Outdoor Noise Level	(DBA) 65

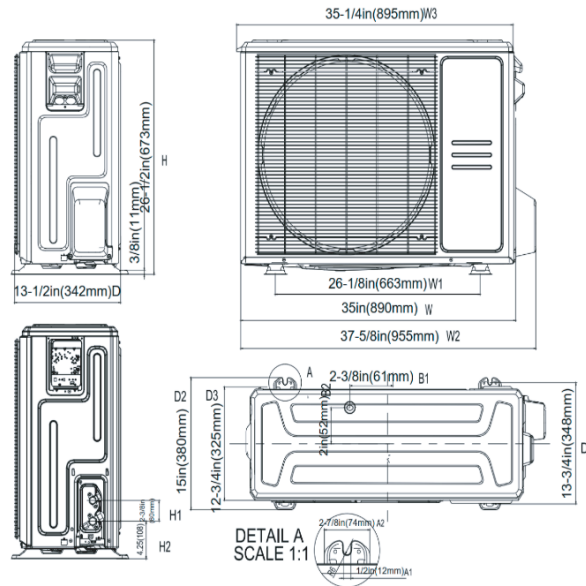
ELECTRICAL	
Indoor Power Supply	115/208/230V,60Hz,1Ph
Indoor Min. Circuit Amps 115V/(208/230V)	14.5/11.0
Indoor Max Over Current Protection	15
Outdoor Power Supply	208/230V,60Hz,1Ph
Outdoor Min. Circuit Amps	38
Outdoor Max Over Current Protection	40
Communication Wiring	18-2 Mitsutomo Thermostat 18-10 3rd Party Thermostat
Compressor (RLA)	28
Outdoor Fan Motor (RLA)	2
Outdoor Fan Motor (W)	250
Indoor Fan Motor (RLA)	7.8
Indoor Fan Motor (W)	750
System Power Input @ Cooling (W)	4690(1345 ~ 5180)
System Power Input @ Heating (W)	4750(1045 ~5200)

DIMENSIONS	
Indoor:	
Dimension (W×D×H)	24.49 x 21.02 x 52.99
Package (W×D×H)	27.95 x 26.77 x 56.50
Unit Weight (lbs)	162.92
Shipping Weight (lbs)	190.92
Outdoor:	
Dimension (W×D×H)	38.58 x 16.34 x 38.39
Package (W×D×H)	45.08 x 19.68 x 42.52
Unit Weight (lbs)	201.06
Shipping Weight (lbs)	232.36

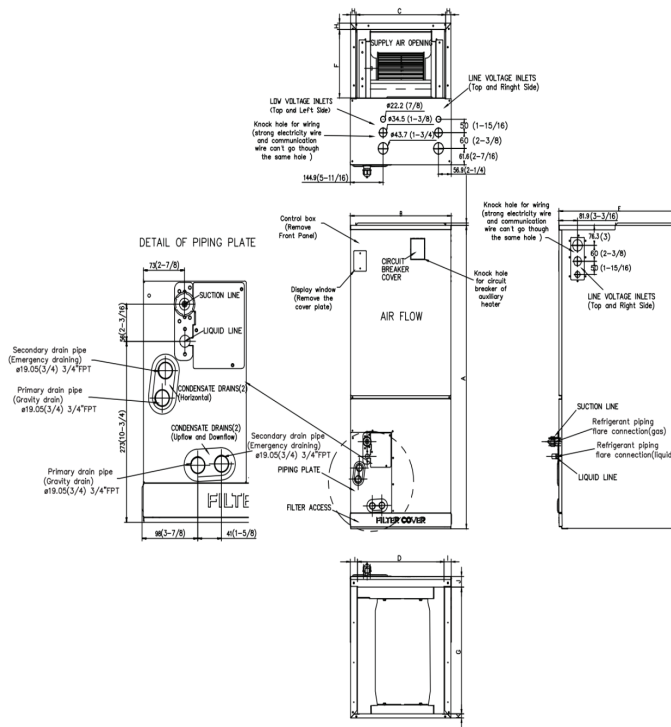
REFRIGERANT PIPE DATA	
Liquid Size (in.)	3/8
Gas Size (in.)	3/4
Max. Piping Length (ft)	246.0
Max. Height Difference (ft)	98.4
Max. Pre-charged Length (ft)	24.6
Refrigerant Pre-charged Amount (oz)	134.04
Additional Charge of Refrigerant (oz/ft)	0.7
Connection Method	Flared

WARRANTY	
	5 years compressor 5 years parts

Outdoor Unit Dimension



Indoor Unit Dimension (Internal Pump)



Model	Unit	A	B	C	D	E	F	G	H	I	J	K
48K	inch	53	24.5	22 5/8	22 1/8	21	10 1/4	18 3/4	15/16	11/8	15/8	3/4