

## Mitsutomo Submittal Data Sheet

# R-454B 60k High Heat Multi Position Air Handler Heat Pump

Job Name: \_\_\_\_\_

Engineer: \_\_\_\_\_

Submitted By: \_\_\_\_\_

Date: \_\_\_\_\_

Unit Tag: \_\_\_\_\_

### System Info & Features:

- 4 way multi position air handler
- Up to .8" static pressure
- 24V thermostat option
- Heating down to -22 deg F
- Self diagnostics
- Super quiet
- ECM blower motor
- Programmable smart wall thermostat
- Large handheld remote
- Auto condenser coil cleaning cycle



MODEL NUMBER	
Indoor unit:	UHM60-DB-LA-Q
Outdoor unit:	UHO60-NB-LA-Q
Certified:	

OPTIONAL ACCESSORIES	
8kw Electric Heat Kit	M-EAH-08-Q
15kw Electric Heat Kit	M-EAH-15-Q

SYSTEM PERFORMANCE AND DATA	
<b>Cooling Efficiencies and Performance</b>	
SEER2	16.0
EER2	10.0
Rated Capacity	54000
Min/Max Capacity	11400~56300
Moisture Removal (L/H)	5.87
Standard Operating Range (F°)	-22~-122
Conditions:	Indoor: 80F° DB/67F° WB Outdoor: 95F° DB/75F° WB
<b>Heating Efficiencies and Performance</b>	
HSPF2-4	9.0
COP	3.10
1. @ 47F° Rated	56000
1. @ 47F° Min/Max Capacity	8100~64500
2. @ 17F° Rated	45000
3. @ 5F° Rated: Capacity / COP	52000/1.8
3. @ 5F° Max: Capacity	52000
Standard Operating Range (F°)	-22~-75
1. Conditions:	Indoor: 70F° DB/60F° WB Outdoor: 47F° DB/43F° WB
2. Conditions:	Indoor: 70F° DB/60F° WB Outdoor: 17F° DB/15F° WB
3. Conditions:	Indoor: 70F° DB/60F° WB Outdoor: 5F° DB/5F° WB

SPECIFICATIONS	
<b>Indoor:</b>	
Indoor Air Flow (Turbo/H/M/L/Q) (CFM)	1807.0 / 1583.3 / 1359.7 / 1136.0 / 1136.0
Indoor Noise Level (Turbo/H/M/L/Q) (DBA)	54.5 / 52 / 49.5 / 34.5 / 34.5
<b>Heating Efficiencies and Performance</b>	
Compressor Type	TWIN-ROTARY
Refrigerant	R454B
Refrigerant Oil Charge (OZ)	43.96
Refrigerant Oil	VG75
Outdoor Air Flow (Max) (CFM)	2648.6
Outdoor Noise Level (DBA)	65

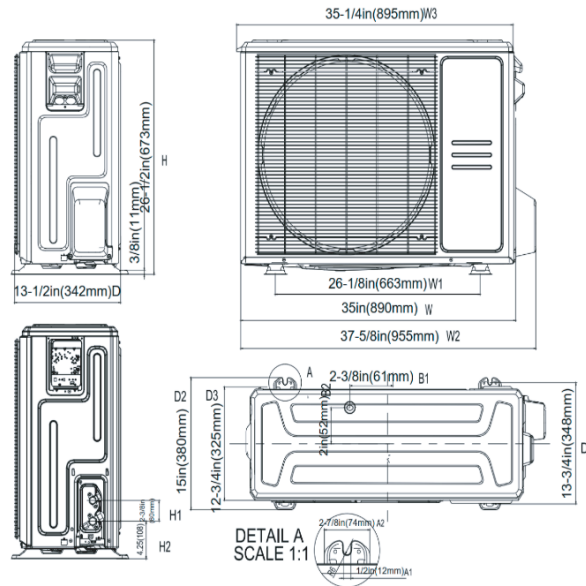
ELECTRICAL	
Indoor Power Supply	115/208/230V,60Hz,1Ph
Indoor Min. Circuit Amps 115V/(208/230V)	14.5/11.0
Indoor Max Over Current Protection	15
Outdoor Power Supply	208/230V,60Hz,1Ph
Outdoor Min. Circuit Amps	40
Outdoor Max Over Current Protection	40
Communication Wiring	18-2 Mitsutomo Thermostat 18-10 3rd Party Thermostat
Compressor (RLA)	31
Outdoor Fan Motor (RLA)	1.2
Outdoor Fan Motor (W)	85
Indoor Fan Motor (RLA)	8.3
Indoor Fan Motor (W)	750
System Power Input @ Cooling (W)	5400(1540 ~ 6430)
System Power Input @ Heating (W)	5300(725 ~5970)

DIMENSIONS	
<b>Indoor:</b>	
Dimension (W×D×H)	24.49 x 21.02 x 52.99
Package (W×D×H)	27.95 x 26.77 x 56.50
Unit Weight (lbs)	162.92
Shipping Weight (lbs)	190.92
<b>Outdoor:</b>	
Dimension (W×D×H)	37.48 x 16.34 x 52.48
Package (W×D×H)	43.11 x 19.49 x 58.27
Unit Weight (lbs)	242.95
Shipping Weight (lbs)	275.13

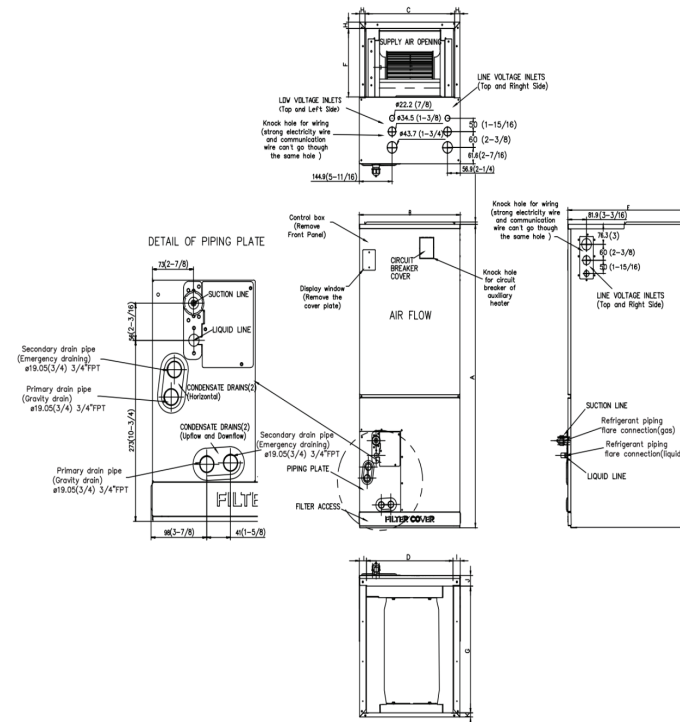
REFRIGERANT PIPE DATA	
Liquid Size (in.)	3/8
Gas Size (in.)	3/4
Max. Piping Length (ft)	246.0
Max. Height Difference (ft)	98.4
Max. Pre-charged Length (ft)	24.6
Refrigerant Pre-charged Amount (oz)	183.42
Additional Charge of Refrigerant (oz/ft)	0.7
Connection Method	Flared

WARRANTY	
	5 years compressor 5 years parts

## Outdoor Unit Dimension



## Indoor Unit Dimension (Internal Pump)



Model	Unit	A	B	C	D	E	F	G	H	I	J	K
60K	inch	53	24.5	22 5/8	22 1/8	21	10 1/4	18 3/4	15/16	11/8	15/8	3/4