

## Mitsutomo Submittal Data Sheet

# R-454B 18k Non High Heat Multi Position Air Handler Heat Pump

Job Name: \_\_\_\_\_

Engineer: \_\_\_\_\_

Submitted By: \_\_\_\_\_

Date: \_\_\_\_\_

Unit Tag: \_\_\_\_\_

### System Info & Features:

- 4 way multi position air handler
- Up to .8" static pressure
- 24V thermostat option
- Heating down to -13°
- Self diagnostics
- Super quiet
- ECM blower motor
- Programmable smart wall thermostat
- Large handheld remote
- Auto condenser coil cleaning cycle



MODEL NUMBER	
Indoor unit:	UHM18-BB-LA-Q
Outdoor unit:	RHO18-NB-LA-Q
Certified:	

OPTIONAL ACCESSORIES	
8kw Electric Heat Kit	M-EAH-08-Q
15kw Electric Heat Kit	M-EAH-15-Q

SYSTEM PERFORMANCE AND DATA	
Cooling Efficiencies and Performance	
SEER2	18.8
EER2	11.0
Rated Capacity	18000
Min/Max Capacity	5350~20000
Moisture Removal (L/H)	1.71
Standard Operating Range (F°)	-13~122
Conditions:	Indoor: 80F° DB/67F° WB Outdoor: 95F° DB/75F° WB
Heating Efficiencies and Performance	
HSPF2-4	9.1
COP	3.15
1. @ 47F° Rated	18000
1. @ 47F° Min/Max Capacity	5600~19000
2. @ 17F° Rated	12600
3. @ 5F° Rated: Capacity / COP	11200/2
3. @ 5F° Max: Capacity	11200
Standard Operating Range (F°)	-13~75
1. Conditions:	Indoor: 70F° DB/60F° WB Outdoor: 47F° DB/43F° WB
2. Conditions:	Indoor: 70F° DB/60F° WB Outdoor: 17F° DB/15F° WB
3. Conditions:	Indoor: 70F° DB/60F° WB Outdoor: 5F° DB/5F° WB

SPECIFICATIONS	
Indoor:	
Indoor Air Flow (Turbo/H/M/L/Q) (CFM)	618.03 / 576.83 / 529.74 / 488.54 / 488.54
Indoor Noise Level (Turbo/H/M/L/Q) (DBA)	44 / 43 / 41 / 33 / 33
Heating Efficiencies and Performance	
Compressor Type	ROTARY
Refrigerant	R454B
Refrigerant Oil Charge (OZ)	14.88
Refrigerant Oil	VG74
Outdoor Air Flow (Max) (CFM)	1450.9
Outdoor Noise Level (DBA)	55

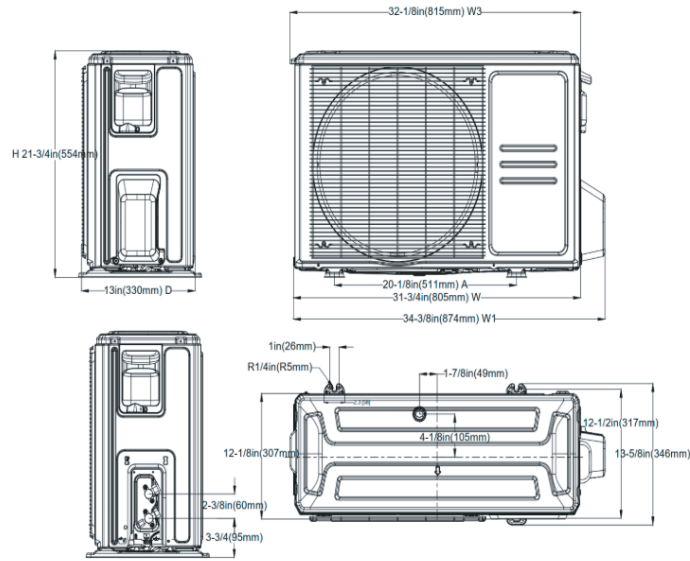
ELECTRICAL		
Indoor Power Supply		115/208/230V,60Hz,1Ph
Indoor Min. Circuit Amps 115V/(208/230V)		5.5/4.0
Indoor Max Over Current Protection		15
Outdoor Power Supply		208/230V,60Hz,1Ph
Outdoor Min. Circuit Amps		16
Outdoor Max Over Current Protection		20
Communication Wiring	18-2 Mitsutomo Thermostat, 18-10 3rd Party Thermostat	
Compressor	(RLA)	10
Outdoor Fan Motor	(RLA)	0.8
Outdoor Fan Motor	(W)	34
Indoor Fan Motor	(RLA)	2
Indoor Fan Motor	(W)	250
System Power Input @ Cooling	(W)	1635(400 ~ 1900)
System Power Input @ Heating	(W)	1675(340 ~1650)

DIMENSIONS		
Indoor:		
Dimension (W×D×H)		17.52 x21.02 x 45.00
Package (W×D×H)		26.57 x 20.87 x 48.62
Unit Weight (lbs)		105.82
Shipping Weight (lbs)		126.76
Outdoor:		
Dimension (W×D×H)		31.69 x 12.99 x 21.81
Package (W×D×H)		36.02 x 14.57 x 24.21
Unit Weight (lbs)		77.16
Shipping Weight (lbs)		83.77

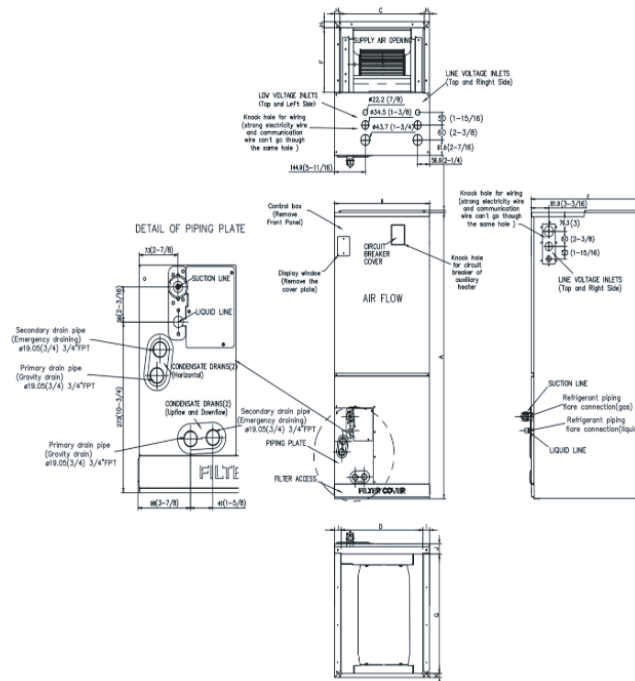
REFRIGERANT PIPE DATA		
Liquid Size (in.)		3/8
Gas Size (in.)		3/4
Max. Piping Length (ft)		98.4
Max. Height Differencex (ft)		65.6
Max. Pre-charged Length (ft)		24.6
Refrigerant Pre-charged Amount (oz)		51.15
Additional Charge of Refrigerant (oz/ft)		0.7
Connection Method		Flared

WARRANTY	
	5 years compressor 5 years parts

## Outdoor Unit Dimension



## Indoor Unit Dimension (Internal Pump)



Model	Unit	A	B	C	D	E	F	G	H	I	J	K
18K	inch	45	17.5	15 5/8	15 1/8	21	10 1/4	18 3/4	15/16	11/4	15	5/8